

# Tostmatik

**HOT TOAST PREPARED  
UNTOUCHED IN 90 SECS**



[www.tostmatik.com](http://www.tostmatik.com)



# Tostmatik

[www.tostmatik.com](http://www.tostmatik.com)

## HOT TOAST IN 90 SECS

- T ABLE TO SERVE TOAST AND BEVERAGE
- T CAPABLE OF TAKING MULTIPLE ORDERS
- T CAPABLE OF MULTIPLE DELIVERIES
- T ABLE TO OFFER CAMPAIGNS



- T SMOKE AND ODOR FREE
- T REMOTELY MANAGABLE
- T VIRTUAL INTELLIGENCE SOFTWARE
- T CONSISTENCY IN TASTE

# Tostmatik




[www.tostmatik.com](http://www.tostmatik.com)

- T FAST :** 60-90 seconds of toasting and 2 minutes of delivery time
- T HYGIENIC :** Toasts prepared untouched. The double-layered packaging. The ones who touch the toasts with their hands for the first time are the customers since the toasts are delivered after being toasted in their packages.
- T TRANSPARENT :** The brands, weights and expiry dates of the products are denoted and they are all certificated.
- T OF HIGH QUALITY:** The toasts available for sale in TOSTMATIK are prepared with the ingredients that are being authorized in accordance with the standards defined by the Ministry of Agriculture and Forestry, and whose quality and taste are being approved by the experts and the people.
- T HEALTHY :** The ingredients that are suitable for public health are being used in the products available for sale in TOSTMATIK.
- T DELICIOUS :** Delicious ingredients with high quality are being preferred for the toasts available for sale in TOSTMATIK. The proper toasting heat and time are being defined by the experts after some tests.



[www.tostmatik.com](http://www.tostmatik.com)

## FOOD SAFETY AND PRODUCTS WITH HALAL CERTIFICATE

-  NATURAL BUTTER, NOT MARGARINE
-  100% PURE FRESH KASHAR CHEESE, NOT TOAST CHEESE
-  100% VEAL IN SAUSAGE AND ROASTED MEAT

# Tostmatik

HOW IT WORKS

[www.tostmatik.com](http://www.tostmatik.com)



SELECTION SCREEN  
WHERE YOU WILL  
SELECT THE PRODUCTS  
AND PROCEED TO THE  
PAYMENT SCREEN



THE SCREEN WHERE  
YOU CAN PAY FOR THE  
PRODUCTS YOU HAVE  
SELECTED

# Tostmatik

[www.tostmatik.com](http://www.tostmatik.com)



YOU CAN GET YOUR  
BEVERAGE AND TOAST  
FROM THE LOWER  
CHAMBER OF TOSTMATİK



YOUR TOASTS  
UNTOUCHED BY HUMAN  
HANDS FROM TOSTMATİK



# Tostmatik

[www.tostmatik.com](http://www.tostmatik.com)



**PAYMENT OPTIONS BY CASH,  
COINS AND CREDIT CARDS**



**ABILITY TO INTEGRATE THE  
MEAL AND STAFF CARDS**



**COIN CHANGE**

# Tostmatik

www.tostmatik.com



**T** TOASTING PROCESS BASED ON VIRTUAL INTELLIGENCE

**T** MULTIPLE PRODUCT DELIVERY AT THE SAME TIME AND QUEUING THE EXTRA TOASTS

**T** THE DETECTION OF UNDELIVERED PRODUCT WITH THE SENSOR TRACKING SYSTEM AND REPAYMENT OF THE MONEY

(THE NUMBERS OF DELIVERY VARY, DEPENDING ON THE MODEL)

# Tostmatik

[www.tostmatik.com](http://www.tostmatik.com)

T

SHARING CAMPAIGN AND  
INFORMATION AND THE  
OPPORTUNITY TO  
ADVERTISE ON THE LED  
PANEL

T

ABILITY TO IDENTIFY THE  
TECHNICAL ISSUES AND TO  
FIX IT IF POSSIBLE



T

ABILITY TO REPORT  
THE TECHNICAL  
ISSUES TO THE  
MANAGEMENT

T

ABILITY TO BE  
MONITORED AND  
CONTROLLED  
REMOTELY

- ⌈ Since TOSTMATIK, thanks to its working system, has fewer mechanical parts than many other vending machines on the market, it requires less maintenance. And the frequency of improper functioning has been minimized. It stands out with its robust and simple working logic.
- ⌈ The heating system used in the preparation of toast is resistor and it is designed in order to cook completely harmless to health.
- ⌈ Depending on the type of product, the toasting time varies between 60-90 seconds.
- ⌈ TOSTMATIK is powered through single-phase electric power system. It consumes 0,6-1,4 kW of electricity per hour, depending on working hours and order density.
- ⌈ The products in TOSTMATIK are contained between +4 and +7 degrees and the necessary coldness is carefully maintained throughout all processes.

# Tostmatik

## TOSTMATIK TYPES AND FEATURES

[www.tostmatik.com](http://www.tostmatik.com)



T

### TOAST AND BEVERAGE MODEL

It has a capacity of 126 toasts and 180 drinks. This model can contain 6 types of toast, 4 types of drinks and serve 3 toasts and 4 drinks at the same time.

#### Features:

Width : 132 cm  
Height : 197 cm  
Depth : 115 cm  
Weight : 600 kg

T

### TOAST BIG MODEL

It has a capacity of 144 toasts. This model can contain 8 types of toast and serve 4 toasts at the same time.

#### Özellikleri:

Width : 100 cm  
Height : 197 cm  
Depth : 115 cm  
Weight : 500 kg

T

### TOAST SMALL MODEL

It has a capacity of 108 toasts. This model can contain 6 types of toast and serve 3 toasts at the same time.

#### Özellikleri:

Width : 78 cm  
Height : 197 cm  
Depth : 115 cm  
Weight : 400 kg

# Tostmatik

[www.tostmatik.com](http://www.tostmatik.com)

TOSTMATIK, which we started R&D activities in 2016, is the patented product of 'Pad Global' and is the only vending machine in the world that can cook toast. At the end of the 3-year R&D process, TOSTMATIK started to operate in the field. All R&D and production processes of TOSTMATIK were carried out in Turkey and by Turkish engineers. It is produced in partnership with ÖNDER AŞ. The system is constantly being developed and R&D activities are the most important issue for us in order to achieve perfection.

TOSTMATIK has many different features apart from classical vending machines.

- Tostmatik is a computer-controlled vending machine and has software that we developed ourselves and based on virtual intelligence.
- Tostmatiks are connected to the network 24/7 and are constantly monitored from our hub.
- The vending machines, which are monitored by the central system, are intervened in the fastest way when repair and supply is required.
- Toasts are loaded into vending machines with a cold chain and stored in the cold room system we have developed.
- Toasts are cooked with a sandwich toaster we developed in the classical style, and there is absolutely no microwave.
- It is possible to choose more than one product in a single order.
- The entire order process is monitored by sensors. All possible problems are reported to the customer and the hub by Tostmatik.
- If the product can not be delivered during the order process followed up until the delivery, the customer is refunded.
- Working hours can be defined and Tostmatik can be put out of service at desired time intervals or days.

# Tostmatik

ORGANIZATIONAL STRUCTURE

[www.tostmatik.com](http://www.tostmatik.com)



## Franchise

FIRST  
INVESTMENT  
FEE

# Tostmatik

PRODUCTION

[www.tostmatik.com](http://www.tostmatik.com)

- T R&D activities of TOSTMATİK started in 2016 and continued in 2017 by getting stronger with the business partnership with ÖNDER A.Ş.
- T With the combination of the technical team and experience within ÖNDER A.Ş. and the ideas and field researches of the team within PAD GLOBAL, the visual and technical designs of TOSTMATİK, which is unique in Turkey and the world, were made and the production stages were started.
- T All R&D and production processes have been developed entirely with Turkish engineers and technical team at ÖNDER A.Ş. production and R&D facilities in Turkey.
- T TOSTMATİK has a registered trademark and an international patent, which we completed as a result of 3 years of R&D and production processes.
- T All of the TOSTMATİKs, which have been in operation since 2019, are produced by ÖNDER A.Ş. in the company facilities and continues to be produced.
- T ÖNDER A.Ş. is the only manufacturer that has been partnered with and authorized for the production of TOSTMATİK.
- T Periodic maintenance and technical support of TOSTMATİK is also provided by ÖNDER A.Ş. and it is under the guarantee of strong infrastructure and technical team.
- T As PAD GLOBAL and ÖNDER A.Ş., we attach great importance to R&D activities and continue. It is getting stronger day by day with the data coming from TOSTMATİKs which has been in operation since 2019 and with the findings and suggestions of our teams



T

Complete and timely production of TOSTMATIKS

T

Service network

T

Ensuring product supply

T

Preparation of contracts and follow-up of legal processes

T

Determining the products to be sold and their prices

T

Control over the entire organization

T

Ensuring coordination between companies in the organization

T

Execution of promotional and advertising activities

T

Finding advertisements to be published on TOSMATIKS

T

Distribution of advertising revenues

T

Contacting the companies to improve service quality and ensuring the contunity according to the feedback

T

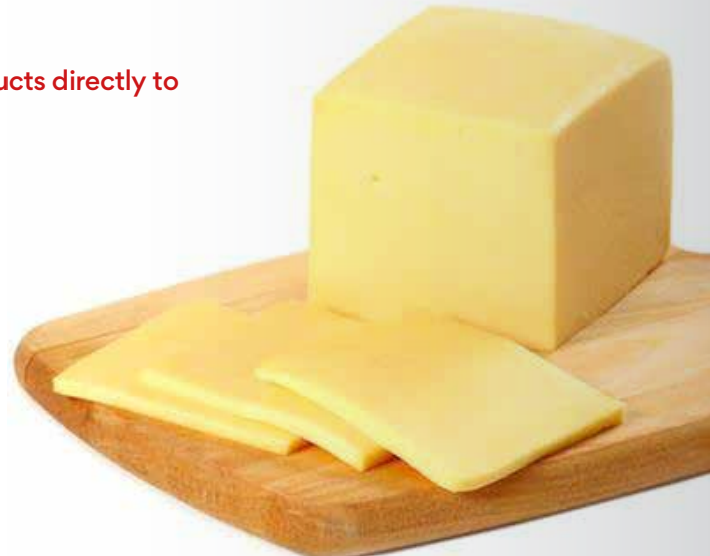
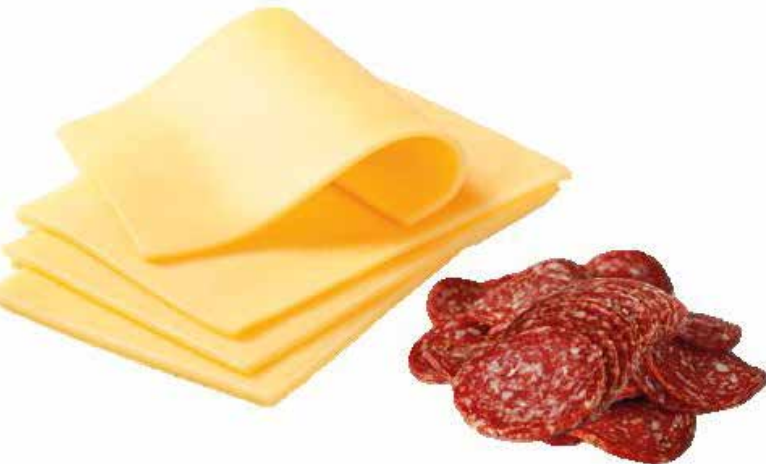
Receiving customer feedback and allocating necessary transactions

# Tostmatik

## PRODUCT SUPPLIERS

[www.tostmatik.com](http://www.tostmatik.com)

- T** Companies that will supply the raw materials and beverages to be used in toasts.
- T** The product supply process is carried out only by PAD GLOBAL or the companies it has authorized due to ensuring the standards in the products, continuity, sustainability and no problems in quality, the raw material to be used is certified and reliable, and the inspection is complete.
- T** Supplier companies deliver the products directly to the catering company.



# Tostmatik CATERING

[www.tostmatik.com](http://www.tostmatik.com)

T

Maintaining the supplied raw materials and products under appropriate conditions

T

Obtaining the necessary certificates and documents and performing regular audits

T

Producing and preserving toasts in a hygienic places, in accordance with legal regulations, in accordance with standards and production recipes

T

Packaging and labeling of manufactured products in accordance with legal regulations

T

Making all products suitable for transport



# Tostmatik

## BUSINESS ADMINISTRATION

[www.tostmatik.com](http://www.tostmatik.com)



- T** Finding places where TOSMATIKS will be operated and making agreements
- T** Carrying out the logistics activities of the products purchased from the catering company and filling the TOSTMATIKS
- T** Continuously monitoring the expiry dates and product deficiencies of the products in TOSTMATIKS
- T** Cleaning and maintenance of TOSTMATIKS
- T** Collection of money accumulated in TOSTMATIKS and tracking of credit card transactions

# Tostmatik

## BUSINESS ADMINISTRATION

[www.tostmatik.com](http://www.tostmatik.com)

T

Keeping statistics on sales made from TOSTMATIKS

T

Completing the decreasing toasts by following the instant stock of TOSTMATIKS

T

To order the products to be loaded on the catering companies to the TOSTMATIKS.

T

Making the division of the total revenue obtained from TOSMATIK's to the beneficiaries

T

Periodic maintenance of TOSTMATIKS

T

Insuring TOSTMATIKS where necessary

T

Detection of malfunctions of TOSTMATIKS and troubleshooting

T

Keeping reports regularly about TOSTMATIKS, Franchises and catering company

T

Carry out advertising activities for the promotion of TOSTMATIKS and the products sold

T

Organizing campaigns related to products sold from TOSTMATIKS



## OUR REFERENCES

# Tostmatik

[www.tostmatik.com](http://www.tostmatik.com)



Mercedes-Benz

 VakıfBank



HALKBANK

alBaraka 

 LCW  
LC WAIKIKI

KOTON



ANADOLU<sup>H</sup>

In Affiliation with  
JOHNS HOPKINS MEDICINE

  
BAYKAR

 MEDİPOL  
UNV-İSTANBUL  
İSTANBUL MEDİPOL ÜNİVERSİTESİ

  
CEKMEKÖY  
BELEDİYESİ

  
SANCaktepe  
BELEDİYESİ



Ask for the updated list

# Tostmatik



0 (216) 460 00 77

0 (553) 730 97 19

info@tostmatik.com

www.tostmatik.com